

November 2011

## Construction of grout shafts starts in Soho Square

### DURATION OF WORK

- Grout shaft construction starts during week commencing 14 November 2011 and will last until summer 2012
- Utility diversions: November 2011 to March 2012
- Sinking the shafts: March 2012 until Summer 2012
- Weekday working hours 08.00 until 18.00
- Saturday working hours 08.00 until 13.00 but on three Saturdays in November/December working hours 08.00 until 18.00
- One hour start up and shut down periods are also permitted

### WHAT TO EXPECT – CONSTRUCTION

- Putting up fencing around the grout shaft work sites
- Increase in noise when breaking out the ground in the shaft locations
- Use of an excavation machine and a dumper truck to remove excavated material

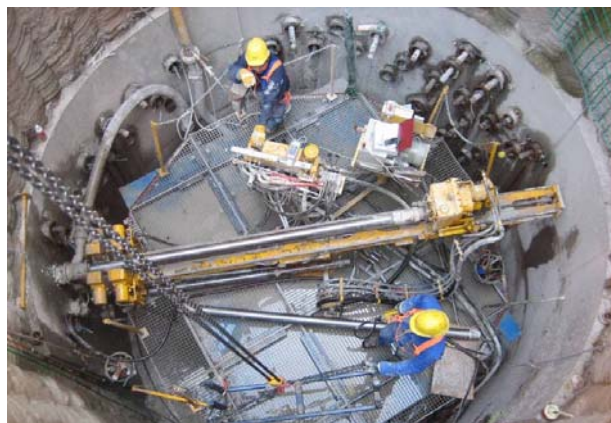
Further to our information sheet in September we now have consent from Westminster City Council to proceed with the grout shaft works in Soho Square. BAM Ferrovial Kier will start construction during the week commencing 14 November 2011.

The first stage of the construction will involve establishing work sites in the carriageway around Soho Square (see map overleaf) which will take approximately one week.

The second stage involves breaking open the road surface so that utilities and any other underground obstructions can be diverted before we begin sinking the shafts.

Initially we will use fencing around the construction sites. Once we know the extent of the utilities and work on sinking the shaft begins, hoarding will be installed. Acoustic blankets will surround the areas that are being excavated and the noise levels will be kept to a minimum for certain properties at particular times of the day. This may mean that we will work extended hours on three Saturdays during November/December 2011. We do not expect to work on Sundays until later in 2012 when the grout shafts have been completed and the array of pipes (TAMs) need to be drilled.

Once the worksites have been established a revised traffic management system will be necessary to control the flow of vehicles around Soho Square (see map overleaf). Pedestrian access around the square will be maintained.



*A typical grout shaft*

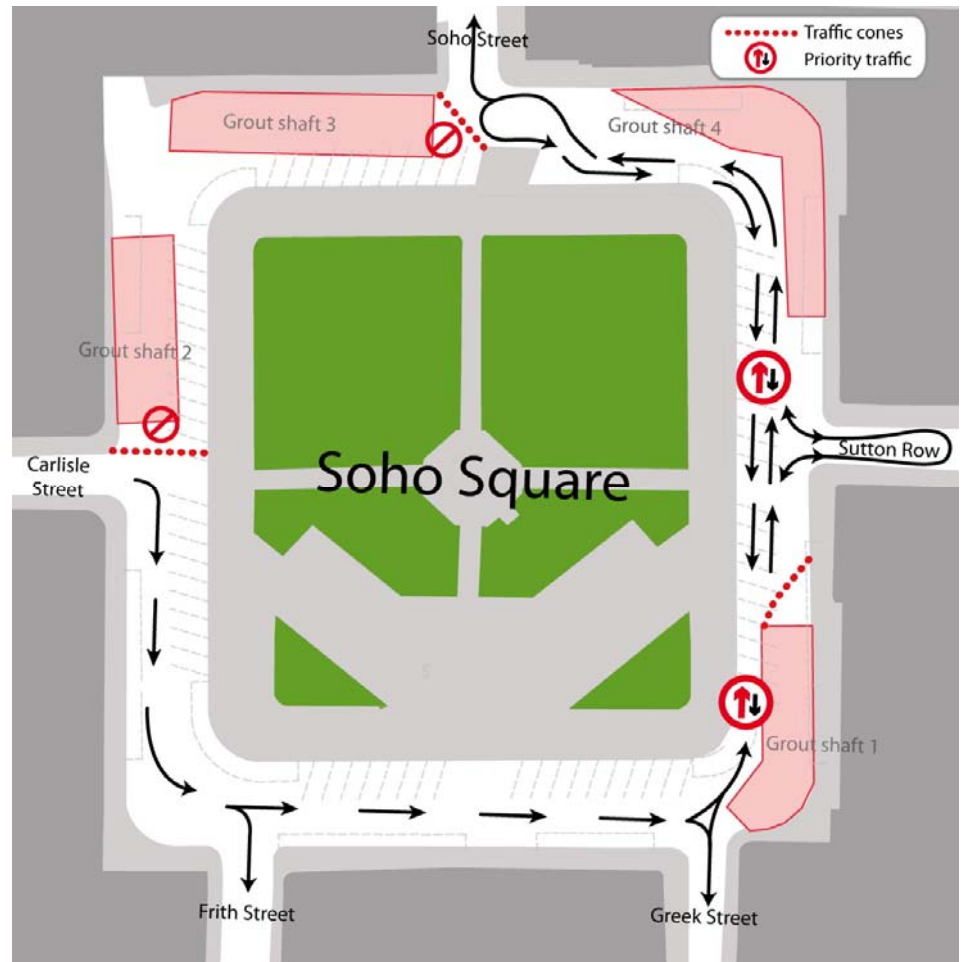
*Please turn over*

## WHAT TO EXPECT – TRAFFIC/ACCESS

- North west corner of square closed to through traffic
- Traffic priority system in place on east side of the square
- Pedestrian access maintained

## WHAT WE WILL DO

- Ensure access to properties is maintained
- Ensure that access for deliveries is maintained
- Use best practical means to minimise disruption to the community
- Monitor noise, vibration and dust and keep within the permitted levels



Deliveries to properties will be maintained but we may need notice for deliveries in the north-west quadrant of the square. We would therefore welcome advance discussions with owners/occupiers. Please contact the Crossrail helpdesk on 0345 602 3813.

Once the utility diversions are complete we will start sinking the grout shafts. We expect this to begin in March 2012 and will provide you with the detail of these works closer to the time. We expect the grout shafts to be completed in summer 2012. Thereafter they can be activated when required to mitigate any impacts of settlement.

Further information on ground treatment can be found in “Your Guide to Ground Treatment” on the Crossrail website:  
<http://www.crossrail.co.uk/route/communities/ground-settlement>

We apologise for any inconvenience caused as a result of our works. If you have any queries, please contact the 24-hour public helpdesk on 0345 602 3813 or email [helpdesk@crossrail.co.uk](mailto:helpdesk@crossrail.co.uk).



To request information about Crossrail in Large Print, Audio, Braille, or Easy Read, please contact Crossrail as below. If you would like information in your language, please contact Crossrail, stating the language or format you require.

www.crossrail.co.uk  
0345 602 3813

Audio  Braille  Easy Read

Arabic تتوفر المعلومات عن مشروع «كروس ريل» (Crossrail) بلغات مختلفة وتسجيل صوتي على كاسيت وبلغة بريل. يرجى وضع علامة في المربع المناسب لمعرفة الطريقة التي تطلبها. اضع اسمك وعنوانك واعيده الى «كروس ريل» على العنوان المذكور أدناه.

Bengali বিভিন্ন ভাষাতে, অডিও এবং ব্রেইল ফরম্যাটে ক্রসরেল সঙ্কে তথ্যাবলী পাওয়া যাচ্ছে। আপনার যে ফরম্যাটে দরকার সেটার পার্থক্যের ঘরে টিক্ চিহ্ন দিন। আপনার নাম এবং ঠিকানা লিখে নিচে উল্লেখিত ক্রসরেলের ঠিকানায় চিঠিটি ফেরত পাঠান।

Chinese 關於橫跨鐵路(Crossrail)的資訊備有不同語文版本，錄音磁帶和盲文。請在相應方格內打鉤表明你的需求，並寫上姓名和住址，然後寄回以下地址。

Greek Οι πληροφορίες για το Crossrail είναι διαθέσιμες σε διάφορες γλώσσες, σε ηχογραφήσεις και σε Μπράιλ. Επιλέξτε το κατάλληλο πλαίσιο για την επιθυμητή μορφή. Σημειώστε το όνομα και τη διεύθυνσή σας και επιστρέψτε το παρόν στο Crossrail στην παρακάτω διεύθυνση.

Gujarati ક્રોસરેલ બાબત માહિતી અનેક ભાષાઓમાં, ઓડિયો અને બ્રેલમાં ઉપલબ્ધ છે. તમને જે ફોર્મેટમાં આવશ્યક હોય, તેની સાથે આપેલ બોક્સમાં મહેરબાની કરીને ટિકનું ચિહ્ન કરો. પોતાનું નામ અને સરનામું લખો અને નીચે જણાવેલ સરનામે આને પાછું મોકલો.

Hindi क्रॉसरेल के बारे में जानकारी अनेक भाषाओं में, ऑडियो और ब्रैल में उपलब्ध हैं। आपको जिस फॉर्मेट में जरूरत हो, उस के साथ दिये बॉक्स में कृपया टिक का निशान लगायें। अपना नाम और पता लिखें और निम्नलिखित क्रॉसरेल के पते पर इसे वापस भेजें।

Punjabi ਕ੍ਰਾੱਸਰੇਲ ਬਾਰੇ ਜਾਣਕਾਰੀ ਅਨੇਕਾਂ ਜ਼ਬਾਨਾਂ 'ਚ, ਆੱਡਿਓ ਅਤੇ ਬ੍ਰੇਲ 'ਚ ਉਪਲਬਧ ਹੈ। ਤੁਹਾਨੂੰ ਜ਼ਿਹੜੇ ਵੀ ਫ਼ਾਰਮੈਟ 'ਚ ਲੋੜ ਹੈ ਉਸ ਦੇ ਠਾਣ ਦਿੱਤੇ ਖ਼ਾਨੇ 'ਚ ਟਿੱਕਾ ਕਰਕੇ ਟਿਕ ਦਾ ਨਿਸ਼ਾਨ ਲਾਓ। ਆਪਣਾ ਨਾਂ ਅਤੇ ਪਤਾ ਲਿਖੋ ਅਤੇ ਹੇਠ ਦਿੱਤੇ ਕ੍ਰਾੱਸਰੇਲ ਦੇ ਪਤੇ 'ਤੇ ਇਸ ਨੂੰ ਵਾਪਸ ਭੇਜ ਦਿਓ।

Somali Akhbaarta Crossrail waxaa lagu heli karaa iyadoo lagu qoray luqado kala duduwan, cajal maqal ah iyo Qoraalka Indhoolayaasha. Fadlan calaamadi sanduuqa quseeya si aad u muujiso qaabka aad u baahan tahay. Soo raacsii magacaada iyo cinwaankaada kuna soo celi Crossrail oo laga helo cinwaanka hoos ku qoran.

Turkish Crossrail hakkındaki bilgileri çeşitli dillerde, sesli ve Braille körlere alfabeyle yazılmış olarak alabilirsiniz. Lütfen nasıl istediğinizi gösteren kutuyu işaretleyin. Adınızı ve adresinizi de ekleyerek, Crossrail'in aşağıdaki adresine gönderin.

Urdu کراس ریل کے متعلق معلومات مختلف زبانوں، آڈیو، بریل میں دستیاب ہیں، برائے مہربانی آپ کو جس شکل میں درکار ہیں اُس حوالے سے متعلقہ خانے میں نشان لگائیں۔ اپنا نام اور پتہ کے ساتھ نیچے دئے گئے کراس ریل کے پتہ پر واپس بھیجوائیں۔

Vietnamese Thông tin về Crossrail có sẵn bằng nhiều thứ tiếng, ghi âm và Braille (ngôn ngữ dành cho người mù). Xin vui lòng đánh dấu vào ô liên hệ để biểu lộ dạng thức quý vị yêu cầu. Hãy ghi tên và địa chỉ đồng thời hoàn lại cho Crossrail theo địa chỉ dưới đây.

Please state other language required below

Return this form by post:

**FREEPOST CROSSRAIL**  
(no postage or address required)

Helpdesk 24 hours, 7 days a week

Telephone: 0345 602 3813  
E-mail: helpdesk@crossrail.co.uk

### Drop in to our Visitor Centres

West End Visitor Information Centre  
16-18 St Giles High Street, WC2H 8LN

Open Tuesdays and Thursdays  
11.00 to 19.00

Whitechapel Visitor Information Centre  
Idea Store, 321 Whitechapel Road, E1 1BU

Open Mondays and Wednesdays  
11.00 to 19.00